

**How did World War 2 impact our local area?**

Driver: History

Year 6  
Autumn 2  
2025-2026

**As writers we will...**

be writing a flashback narrative using the short film 'The Piano' as a stimulus. We will then move on to completing a diary entry, using 'Letters From The Lighthouse' and Anne Frank's diary as stimuli.



**As mathematicians we will...**

be deepening our knowledge of fractions, including adding, subtracting, multiplying and dividing them. We will also investigate fractions of amounts, before moving onto ratio.



**As scientists we will...**

be able to recognise that light appears to travel in straight lines and use the idea to explain that objects are seen because they give out or reflect light into the eye, as well as knowing how shadows are formed.



**As historians we will...**

learn key information about World War 2 and how it impacted people's lives. We will then consider how it affected the people of Rushden, including details about the Blitz and evacuation. We will also examine real life accounts of local children during the time of World War 2.



**Reading for Pleasure Class**

**Novel:**



Our focus skill for this term will be:



**Home Learning Project:**

Create your own Anderson Shelter using your chosen medium.



**As technicians we will...**

learn about the creation of websites for a chosen purpose. We will identify what makes a good web page and use this to design and evaluate our own websites. We pay specific attention to copyright and fair use of media, the aesthetics of the site, and navigation paths.



**In French we will...**

continue to deepen our understanding of how to describe both our own houses and the rooms within them. We will then move on to learning language related to visiting a town in France, including asking for directions and vocabulary linked to transport.



**As designers we will...**

be expanding on our design skills (measuring, cutting, joining, shaping and finishing techniques with construction materials) to design, make and evaluate a war memorial structure.



**In Religious Education we will...**

Be exploring the journey of life and considering philosophical questions about life after death. We will be focusing on ideas and beliefs from a Christian and Hindu perspective.



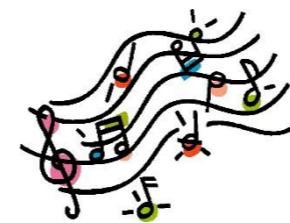
**As athletes we will...**

learn different yoga poses and consider how to combine them into a routine. We will be developing our tag rugby skills by improving our defending, attacking and team play skills.



**As musicians we will...**

be exploring jazz music. We will identify the style structures, structures of songs, as well as identifying instruments we can hear.



**In PSHE we will...**

be celebrating difference. We will consider the different perceptions of 'normal' and how being different can impact on someone's life. We will also consider how being different can be celebrated or can cause conflict.

