



**RUSHDEN
PRIMARY ACADEMY**

Which European country would Alice visit?

Driver: Geography

Year 4
Autumn 2
2023-2024

As writers we will...

be writing a journey tale about Alice falling down a hole and ending up in a European country. We will be learning how to incorporate speech into our narrative writing. Then, we will be writing a recount based on a Wonderland Tea Party, that we'll be having.



As mathematicians we will... be learning how to subtract four-digit numbers and then we will be using the inverse to check our working.

Furthermore, we will discover what area is and will be solving area problems by using our multiplication facts. As always, we will be continuing to develop our times table knowledge.

As scientists we will...

be learning about different ways to classify animals, be able to group animals depending on their characteristics and be able to confidently describe the habitats of different animals.



As geographers we will...

be learning about the European countries. We will choose our own country to research in detail and then explore the Mediterranean and its tourism.



Our focus skill for this term will be:



As technicians we will...

be writing and recording podcasts using Audacity. We will understand how to record sound and how to use input and output devices accurately.

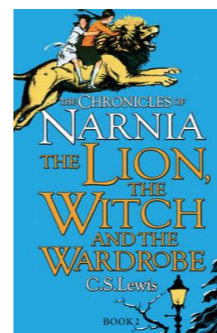


As designers we will...

be investigating 3D nets and exploring ways that they are made and used.



Reading for Pleasure Class Novel:



In Religious Education we will...



continue to learn about Islam. Our focus areas will be the sacred book (Qu'ran) and why the mosque is an important place for Muslims to visit.

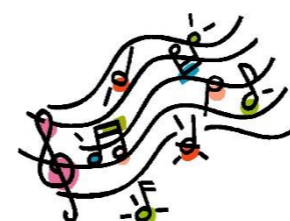
As athletes we will...

develop the skills involved in playing Tag-Rugby, in order to engage in competitive activities and in dance, we will explore and develop a range of movements based on the theme of the Olympics.



As musicians we will...

explore and develop our skills by using the glockenspiel. This will build on previous learning and will result in a performance nearer to Christmas.



In PSHE we will...

be celebrating differences and understanding the importance of accepting everyone. We will explore influences and how important it is not to make assumptions.

