



# RUSHDEN PRIMARY ACADEMY

## How did World War 2 impact our local area?

Driver: History

Year 6  
Autumn 2  
2023-2024

As writers we will...

be writing a flashback narrative using the short film 'The Piano' as a stimulus. We will also be completing other pieces or writing, which are related to our World War 2 learning.



As mathematicians we will...

be deepening our knowledge of fractions, including adding, subtracting, multiplying and dividing them. We will also investigate fractions of amount, before moving onto ratio.



As scientists we will...

be able to recognise that light appears to travel in straight lines and use the idea to explain that objects are seen because they give out or reflect light into the eye, as well as knowing how shadows are formed.



As historians we will...



we will learn key information about World War 2 and how it impacted people's lives. We will then consider how it affected the people of Rushden.

Our focus skill for this term will be:



As technicians we will...

learn about the creation of websites for a chosen purpose. We will identify what makes a good web page and use this to design and evaluate our own websites. We pay specific attention to copyright and fair use of media, the aesthetics of the site, and navigation paths.



As readers we will...



be reading 'Letters from the Lighthouse' and making predictions about what will happen. We will develop our inference and explanation skills. We will also be reading Rose Blanche on the first day back.

As designers we will...

be expanding on our design skills (measuring, cutting, joining, shaping and finishing techniques with construction materials) to design, make and evaluate a war memorial structure.



In Religious Education we will...



Be exploring the journey of life and considering philosophical questions about life after death. We will be focusing on ideas and beliefs from a Christian and Hindu perspective.

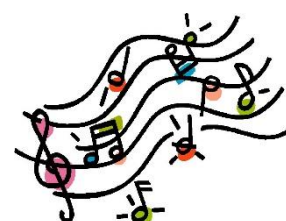
As athletes we will...

learn how to swim 25-50m unaided and demonstrate proficiency in a range of strokes at the surface and below. We will be developing our basketball skills by improving our defending, attacking and team play skills. We will explore ways in which to attack and defend whilst playing mini games.



As musicians we will...

be exploring jazz music. We will identify the style structures, structures of songs, as well as identifying instruments we can hear.



In PSHE we will...

be celebrating difference. We will consider the different perceptions of 'normal' and how being different can impact on someone's life. We will also consider how being different can be celebrated or can cause conflict. We will celebrate the successes of those who are different.

