

# YR5 Knowledge Organiser - Converting Units

## Key Concepts

- Convert between different units of metric measures: kilometre and metre; centimetre and metre; centimetre and millimetre; gram and kilogram; litre and millilitre
- Understand and use approximate equivalences between metric units and common imperial units such as inches, pounds and pints

## Key Vocabulary

- metric / imperial
- length / mass / volume / capacity
- millimetres / centimetres / metres / kilometres
- inches
- grams / kilograms
- pounds
- litres / millilitres
- pints
- estimate / approximate
- convert

## Metric Measures

There are 1,000g in 1kg. To convert from kg to g, we need to multiply by 1,000. To convert from g to kg, we need to divide by 1,000.

$$8.109\text{kg} \times 1,000 = 8,109\text{g}$$

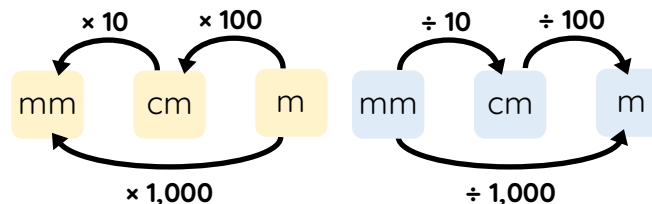
1,000s	100s	10s	1s	0.1s	0.01s	0.001s
			8	1	0	9
8	1	0	9			

There are 1,000ml in 1l. To convert from l to ml, we need to multiply by 1,000. To convert from ml to l, we need to divide by 1,000

$$5,072\text{ml} \div 1,000 = 5.072\text{l}$$

1,000s	100s	10s	1s	0.1s	0.01s	0.001s
5	0	7	2			
			5	0	7	2

The conversion diagrams below demonstrate how to convert between mm, cm and m.

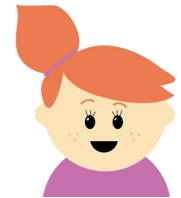


## Imperial Measures

Imperial measures can be used to calculate weight and height.

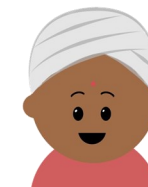
$$2.5\text{cm} \approx 1\text{inch}$$

"My cat Lulu is 16 inches long.  
 $2.5 \times 16 = 40$  therefore she is approximately 40cm long."



$$1\text{kg} \approx 2\text{lbs}$$

"I weigh 72lbs.  $70 \div 2 = 35$  so I weigh approximately 36kg."



We can also use imperial measures to calculate capacities

$$568\text{ml} = 1\text{pint}$$

A cup for the soft drinks machine at the cinema holds 2 pints.

$$568 \times 2 = 1,136\text{ml}$$

Each cup holds 1,136ml or 1.136l.

